



SAMPLE PARK 03 SPLASH PAD PROPOSAL

Nirbo Aquatic Inc.
April, 13 2016



SPLASH PADS MADE EASY



Sample Park 03 (Rendering 1) | 19001-03-Revision 01





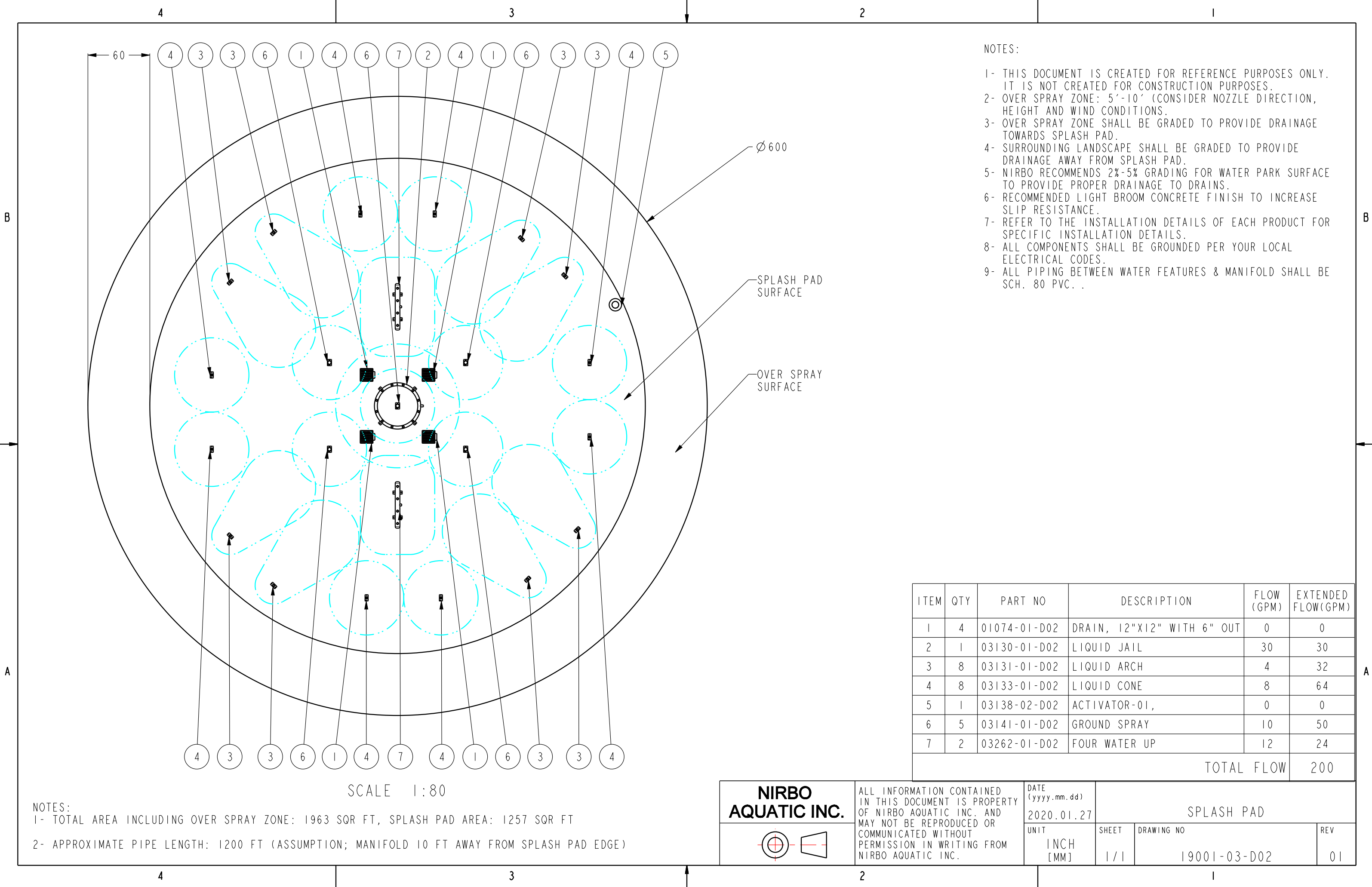
Sample Park 03 (Rendering 2) | 19001-03-Revision 01





Sample Park 03 (Rendering 3) | 19001-03-Revision 01





NOTES:

- 1- THIS DOCUMENT IS CREATED FOR REFERENCE PURPOSES ONLY. IT IS NOT CREATED FOR CONSTRUCTION PURPOSES.
- 2- OVER SPRAY ZONE: 5'-10' (CONSIDER NOZZLE DIRECTION, HEIGHT AND WIND CONDITIONS).
- 3- OVER SPRAY ZONE SHALL BE GRADED TO PROVIDE DRAINAGE TOWARDS SPLASH PAD.
- 4- SURROUNDING LANDSCAPE SHALL BE GRADED TO PROVIDE DRAINAGE AWAY FROM SPLASH PAD.
- 5- NIRBO RECOMMENDS 2%-5% GRADING FOR WATER PARK SURFACE TO PROVIDE PROPER DRAINAGE TO DRAINS.
- 6- RECOMMENDED LIGHT BROOM CONCRETE FINISH TO INCREASE SLIP RESISTANCE.
- 7- REFER TO THE INSTALLATION DETAILS OF EACH PRODUCT FOR SPECIFIC INSTALLATION DETAILS.
- 8- ALL COMPONENTS SHALL BE GROUNDED PER YOUR LOCAL ELECTRICAL CODES.
- 9- ALL PIPING BETWEEN WATER FEATURES & MANIFOLD SHALL BE SCH. 80 PVC.

ITEM	QTY	PART NO	DESCRIPTION	FLOW (GPM)	EXTENDED FLOW(GPM)
1	4	01074-01-D02	DRAIN, 12"X12" WITH 6" OUT	0	0
2	1	03130-01-D02	LIQUID JAIL	30	30
3	8	03131-01-D02	LIQUID ARCH	4	32
4	8	03133-01-D02	LIQUID CONE	8	64
5	1	03138-02-D02	ACTIVATOR-01,	0	0
6	5	03141-01-D02	GROUND SPRAY	10	50
7	2	03262-01-D02	FOUR WATER UP	12	24
TOTAL FLOW					200

SCALE 1:80

- NOTES:
- 1- TOTAL AREA INCLUDING OVER SPRAY ZONE: 1963 SQR FT, SPLASH PAD AREA: 1257 SQR FT
 - 2- APPROXIMATE PIPE LENGTH: 1200 FT (ASSUMPTION; MANIFOLD 10 FT AWAY FROM SPLASH PAD EDGE)

NIRBO AQUATIC INC. 	ALL INFORMATION CONTAINED IN THIS DOCUMENT IS PROPERTY OF NIRBO AQUATIC INC. AND MAY NOT BE REPRODUCED OR COMMUNICATED WITHOUT PERMISSION IN WRITING FROM NIRBO AQUATIC INC.		DATE (yyyy.mm.dd) 2020.01.27	SPLASH PAD	
	UNIT INCH [MM]	SHEET 1/1	DRAWING NO 19001-03-D02	REV 01	