

# BERGO SOLID FLOORING SYSTEM

A UNIQUE FLOORING CONCEPT FOR AREAS WITH HIGH DEMANDS.

**bergo**<sup>®</sup>  
FLOORING



CAN BE APPLIED TO DIFFICULT AND INSUFFICIENT AREAS SUCH AS SAND, SOIL, GRASS AND ICE.





## CBR (CALIFORNIA BEARING RATIO)

The flexible SOLID flooring System can be placed even on grounds with very low CBR values, e.g. clay etc.

The soft ground material will fill up the underneath rip design of the elements to further increase element stability. Important is that the ground is not sinking such as moor, swamp land, etc.

The floor tiles create a "bridging-effect" over the laid out ground. If there is a hole underneath the element may bridge it completely or bend into the whole depending on the size of hole and load. After the vehicle has passed over the element it will bounce back. The driveway should be closed also in width to have the best possible shear force performance especially if the driveway is going up and down in longitudinal direction and eventually also has a transversal angle.



Both floor types can be fixed to a soft substructure with ground anchors.

**BERGO SOLID** flooring system is a strong, flexible and easy mounted ground protecting interlocking floor with high sustainability.

**BERGO SOLID** comes in two different models: Basic and Superior. The hexagonal design provides exceptionally strong locking in six directions.

**BERGO SOLID** is made from strong plastic (HDPE), developed for the UN for emergency and conflict areas. Its flexibility and strength makes these ground protecting floor tiles perfect for store units, pavilions and even to build temporary roads where heavy vehicle can operate. Even when it comes to events, camping and as a protecting surface, **BERGO SOLID** flooring system is optimal to use.

#### ADVANTAGES:

- Heavy duty floor.
- Can be applied on all types of outdoor surfaces, even sand, soil, grass and ice.
- Adapts to the subground and no preliminary work is needed.
- Can resist very heavy loads and carries trucks, machines and cars.
- Easy to install and move.
- Time of installation/person: approx. 100 m<sup>2</sup>/h

#### USAGE AREAS:

- Warehouses and tents.
- Outdoor events and concert venues.
- Temporary parking lots, e.g. in connection with events.
- Temporary roads that also allows heavy vehicles (e.g. building/construction works).
- As subfloor for sport arenas.
- Protection of existing surfaces.
- Events on ice.



**STRONG, FLEXIBLE  
AND EASY MOUNTED!**

**TIME OF INSTALLATION/PERSON  
APPROX. 100 m<sup>2</sup>/h**





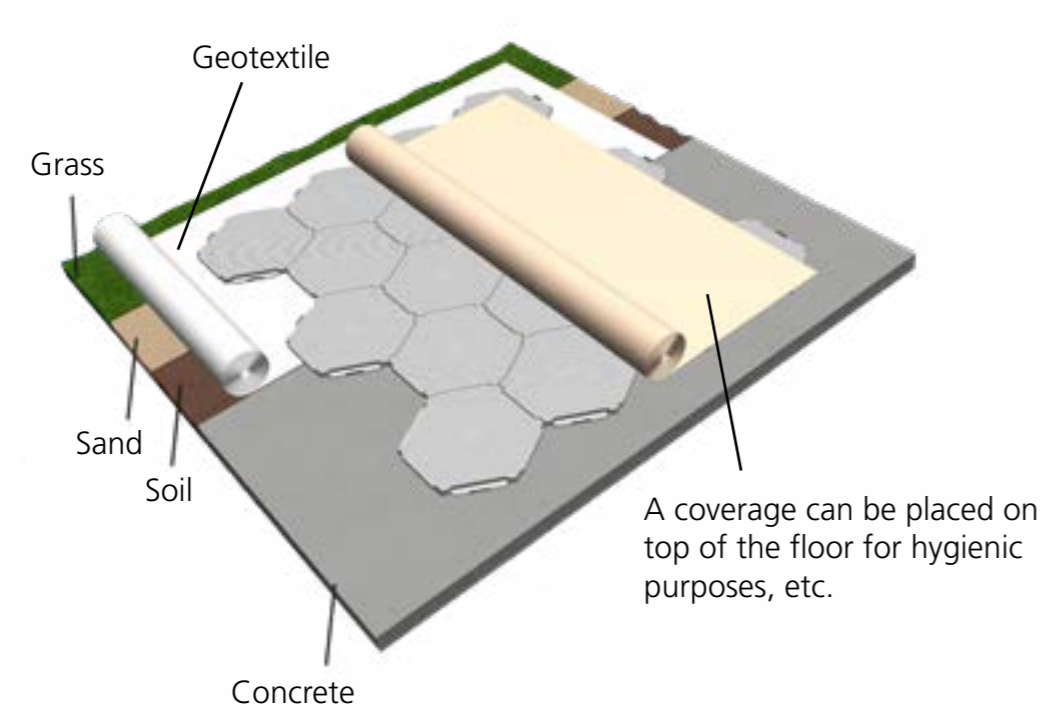
**GROUND PROTECTING  
INTERLOCKING FLOOR WITH  
HIGH SUSTAINABILITY.**



**EASY TO INSTALL.**

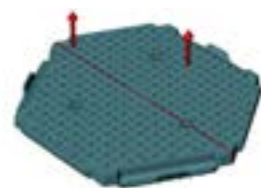
# SOLID FLOORING SYSTEM ASSEMBLED ON DIFFERENT SURFACES

A geotextile underneath protects the tiles from dirt on soft grounds like grass, sand or soil.



## CUT FOR A STRAIGHT FINISH

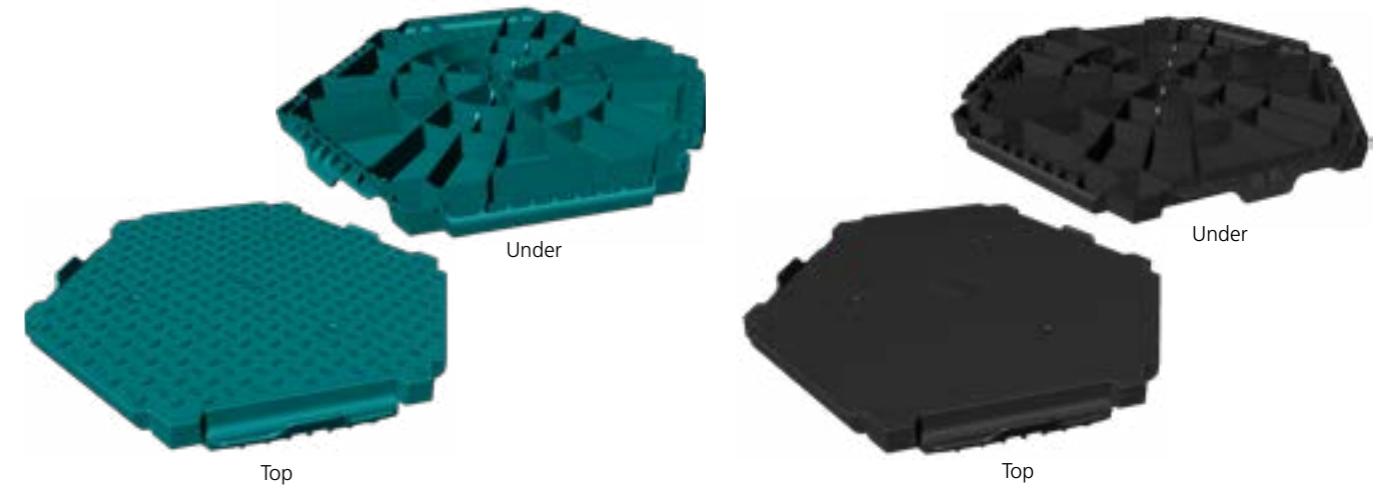
Half tiles for straight edge:



Triangles for straight edge:



# TECHNICAL INFORMATION



## BERGO SOLID Superior

- Material: HDPE
- Made in Sweden
- Point Load: Superior on soft surface: 20 ton/m<sup>2</sup>  
Superior on solid/hard surface: 600 ton/m<sup>2</sup>
- Length: 630 mm
- Width: 575 mm
- Height: 50 mm
- Weight/tile: 3,1kg
- Weight/m<sup>2</sup>: ca 11,5 kg
- Colour: Green. Request for optional colours.
- Temperature: -30 ° C to + 70
- U-value of units: 0,8 W/m<sup>2</sup>K
- Warranty: 5 years
- Fire Category: B2



## BERGO SOLID Basic

- Material: HDPE
- Made in Sweden
- Point Load: Basic on soft surface: 5 ton/m<sup>2</sup>  
Basic on solid/hard surface: 600 ton/m<sup>2</sup>
- Length: 630 mm
- Width: 575 mm
- Height: 50 mm
- Weight/tile: 2.9 kg
- Weight/m<sup>2</sup>: ca 10,5 kg
- Colour: Black
- Temperature: -30 ° C to + 60
- U-value of units: 0,8 W/m<sup>2</sup>K
- Warranty: 5 years
- Fire Category: B2



ISO 9001

MADE IN SWEDEN



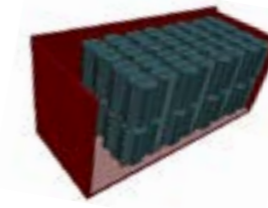
## LOADING ON A PALLET

### BERGO SOLID Basic

- 84 pcs base tiles (22.68 m<sup>2</sup>)
- 1250 x 1135 x 1200 mm (Length x Width x Height)
- Weight pallet: 243 kg
- Double stack two pallets to a total height of 2400 mm

### BERGO SOLID Superior

- 84 pcs base tiles (22.68 m<sup>2</sup>)
- 1250 x 1135 x 1200 mm (Length x Width x Height)
- Weight pallet: 260 kg
- Double stack two pallets to a total height of 2400 mm



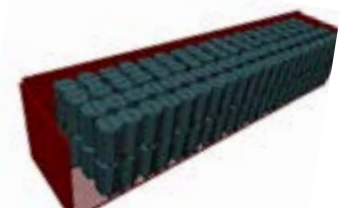
## LOADING 20FT CONTAINER

### BERGO SOLID Basic

- 1280 pcs base tiles (345,6 m<sup>2</sup>)
- Weight container: 1280 pcs x 2,9 kg = 3712 kg + pallets

### BERGO SOLID Superior

- 1280 pcs base tiles (345,6 m<sup>2</sup>)
- Weight container: 1280 pcs x 3,1 kg = 3968 kg + pallets
- 1 Pallet: 115 cm high (20 tiles high) = 80 pcs/pallet = 21,6 m<sup>2</sup>.
- Totally 16 pallets stacked á 21,6 m<sup>2</sup> = 1280 pcs = 345,6 m<sup>2</sup>.



## LOADING 40FT HIGH CUBE CONTAINER

Totally 36 pallets stacked.

### BERGO SOLID Basic

- 3024 pcs base tiles (816,48 m<sup>2</sup>)
- Weight container: 3024 pcs x 2,9 kg = 8770 kg

### BERGO SOLID Superior

- 3024 pcs base tiles (816,48 m<sup>2</sup>)
- Weight container: 3024 pcs x 3,1 kg = 9375 kg



**WORLD LEADER IN  
MULTIFUNCTIONAL  
FLOOR TILES**

[www.bergoflooring.com](http://www.bergoflooring.com)

**Bergo Flooring AB** P.O. Box 10 SE-334 21 Anderstorp Sweden +46 371 58 77 00 [info@flooring.se](mailto:info@flooring.se)

